



CHB(S) SERIES

SEMI-GANTRY CRANE

Max. Load 20 000Kg

CLESCRANE

Address: Room 902, Building 6, No. 26 Dongqing Street, Zhengzhou, Henan, P.R.China; P.C.: 450000

Tel: +86-371-5532 8269

Email: inquiry@clescrane.com

Website: www.clescrane.com

Clescrane retains the rights to change on product design and specs. at any time.
When purchase and delivery, subject to our actual products.

CLESCRANE®

● WWW.CLESCRANE.COM



ABOUT

With the target of "technology-driven, quality seize the market", Clescrane was established as a systems engineering company in the field of material handling in the year of 2012. Our services cover a wide range of industries, which includes manufacturing industry, processing industry, energy regeneration and so on.

We have been working with the international well-known electrical companies in order to look for cooperation of intelligence hoisting machinery equipment. At the same time, our technical engineers are constantly providing customized designs to meet our customers' needs. Our equipment supervision team ensures the best quality of equipment for our customers. Our professional technical service team will provide zero-distance service to our customers. Clescrane is just on your side to help enhance your business and get sustainable development.

Technology is Clescrane survival principle, quality is the basic foundation of Clescrane survival. Depending on our own technology strength and supervision team, Clescrane has the professional sub-contractor who can provide us the good quality crane parts and control the whole cost in the competitive level. Clescrane intends to create an innovative lifting equipment export service companies and provide customers with the best solution and high-quality manufacturing products. With spirit of "customer first" business philosophy, Clescrane strategic objectives are not for the short-term interests instead of sacrificing the future. CLES people will wholeheartedly provide dedicated service for worldwide customers. When you choose Clescrane, you also increase security and efficiency for your business development at the same time.



Series Semi-Gantry Crane

Lifting Capacity: 1~20t

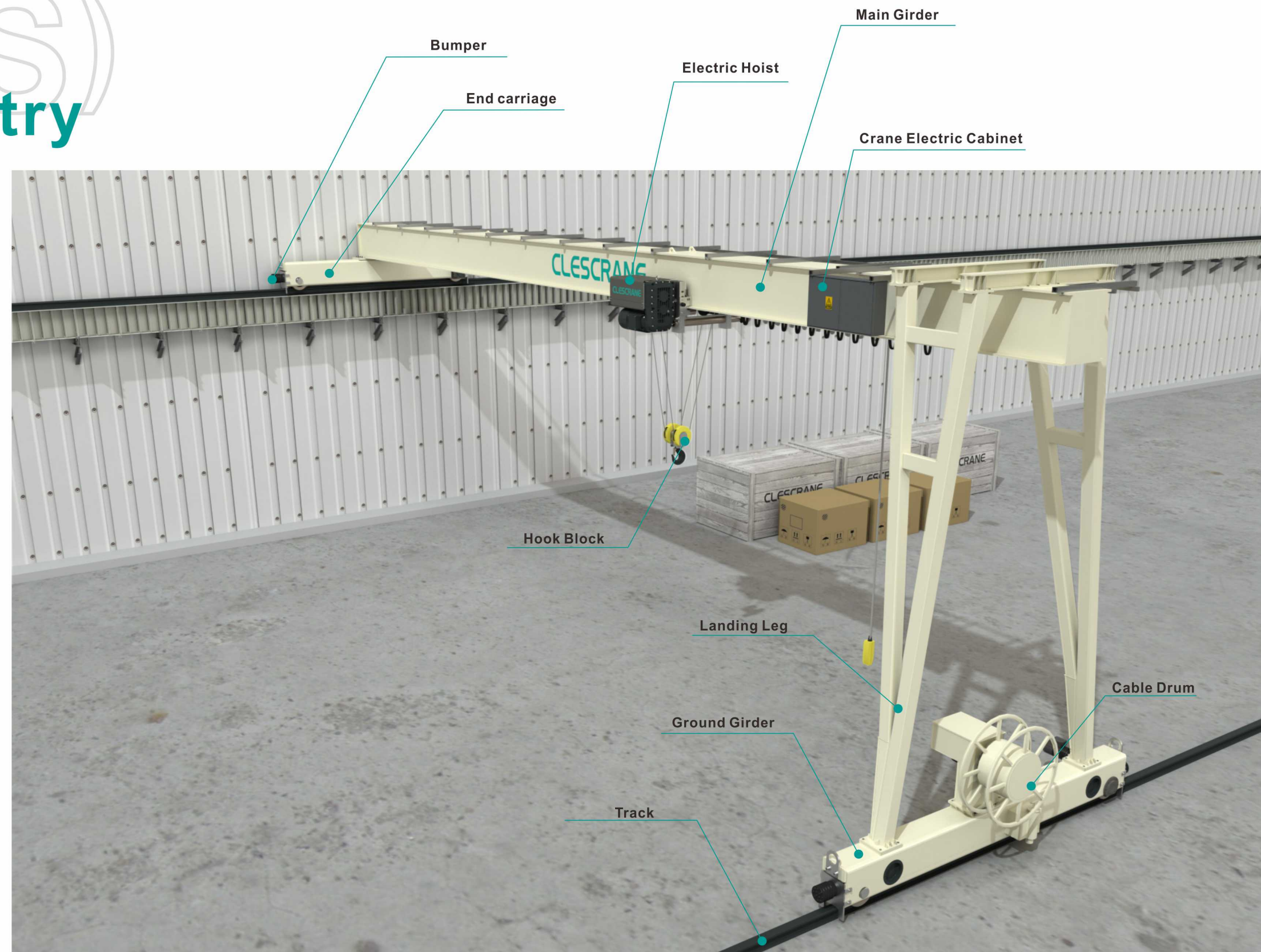
Span: 5m~25m

Lifting Height: ≥6m

Working Class: A3,A4,A5,A6

CHB(S) Series Semi-gantry crane is a track travelling crane. Its proper lifting capacity is 1 to 20 tons. Its span can always be customized to meet customers' needs. Its proper working temperature is -20℃ to 40℃.

The CHB(S) Series semi-gantry crane is a general purpose using crane. This crane product is generally used for material handling in machining workshop. The general operation methods of this crane are wireless remote control and pendant control. The gearbox which is specially used for the ground-beam can make the crane inner working space bigger.



CRANE

European standard (DIN/FEM) optimized design, light dead weight, small wheel load, small volume.

Max. lifting capacity: 20t

Flexible solution for all lifting needs.

Excellent driving properties, stepless control, smooth moving.

16t

CLESCRANE

CLESCRANE

CLESCRANE

CLESCRANE

CLESCRANE

CLESCRANE

HOISTING MECHANISMS

- > Pole changing double-speed motor hoisting with Three-in-One structure, Stable and reliable operation, small volume.
- > Highly efficient electric motor with hard tooth surface reducer, to achieve the low energy consumption and large output torque.
- > The electromagnetic brake can adjust itself automatically with high precision, to achieve fast and reliable braking with low noise.
- > The steel wire rope with high strength and high flexibility, to achieve greater and safer lifting.
- > High strength nylon rope guide and ductile cast iron pulley, its self-lubricating help to achieve a longer service life of the steel wire rope.
- > High strength alloy wheel group, to achieve a long service life for the wheels.
- > Modular design to realize the flexible combination.
- > Maximum lifting capacity can reach to 20t.

CLESCRANE

HOISTING MECHANISMS



Lifting Drive Unit

High-performance, large driving force and compact structure

Various components are running efficiently to ensure high efficiency

Low energy consumption, low noise and eco-friendly design

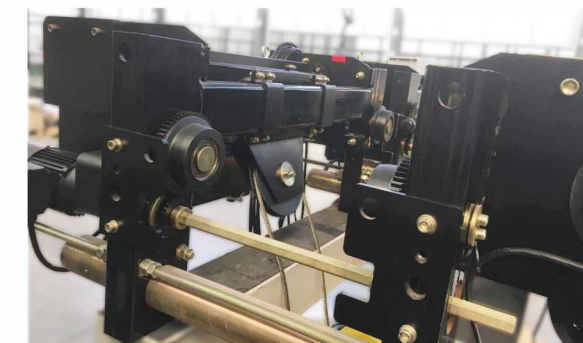
Smooth running, low impact, safe and reliable

No-wear design, long service life

Electrical connection sustained rate is up to 60% to meet the demands of the high frequency lifting

Service life Asbestos-free brake can be up to one million times

High protection grade of brake can meet the requirements of severe environment



Body Structure

Adopt mould stamping or bending steel plate to reduce the use of welding parts and increase the service life and quality of the structure bearing part.

HOISTING MECHANISMS



Connectors

Connectors for aviation, safe and easy maintenance, high protection of IP55.



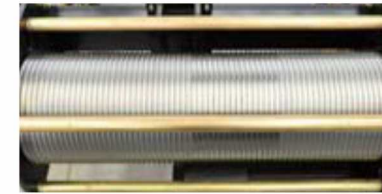
Fixed Pulley

Nodular cast iron material



Free Pulley

Nodular cast iron material



Wire Rope Drum

Use the Q345-type seamless steel tube as raw material and process it by numbers of working procedure. Advanced processing methods to ensure concentricity of the drum. The depth of rope groove is in compliance with the FEM standard. High-strength pressing plates and bolts are fastened on the end of the wire rope to ensure the safety of lifting.



Trolley Drive Unit

Trinity of high-performance motor, reduction gearbox and brake. Compact structure, excellent performance. Low energy consumption, low noise and eco-friendly design. Variable frequency control, smooth running, low impact and meeting requirements of a variety of speed. Asbestos-free brake disc and its normal service life can be up to one million times. No-wear design, maintenance-free, long service life.



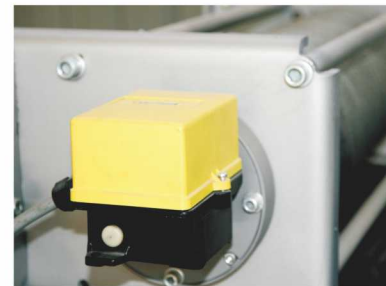
Electric Cabinet

Rational design, convenient maintenance, decreasing running cost. Professional and high quality of electrical components, safe and reliable. Multiple safety protection devices to ensure equipment safe. Protection grade IP55. Clear identification to easy for trouble removal.



Wheel Group

The wheel block adopts module design for the convenient maintenance and change, and the wheel and loaded shaft adopt high quality alloy steel to forge, process and heat-treat bearings with high service life and reliability.



Lifting Height Limiter

Adapting Italy brand, Four-probe limiter dedicated for cranes, to realize slowing down before braking, which is secure and stable.



Hook Block

Forge high-strength alloy steel hook with safety clasp as the standard configuration by special mold and adopt high-strength special nylon slippery rope to reduce the damage to wire rope and lighten the self-weight.



Overload Limiter

Customized overload limiter with high sensitivity can output load or have overloading limit upon customer's requirements.



Wire Rope

The imported wire rope of high-performance with tensile strength up to 2160MPa. The surface with galvanized processing for corrosion prevention effectively. With good flexibility to ensure wear resistance of the wire rope and prolong its service life.



Rope Guide

Lifting weight, good wear resistance, to reduce the wear of wire rope effectively. Prevent wire rope from skipping and loosing to off-groove, and safety first.

MAIN BEAM



Single welding box girder, beam deflection with DIN/FEM standard
 Steel Material: Fe37 or Fe52 (Equal to Chinese standard Q235B and Q345B)
 Whole length CNC cutting for complete web plate, to ensure the precision and smooth curve shape of the camber
 Automatic submerged arc welded main weld with NDT inspection
 Shot-blasting Sa2.5 for complete girder after welding, to achieve stress release
 Epoxy zinc-rich painting for one bottoms and two sides of 120μm thick, to achieve a long lifespan, beautiful appearance and good luster
 The girder and end beams are connected together by Class 10.9 high strength bolts to ensure the structure strength and precision of the whole machine

END CARRIAGES & GROUND BEAM

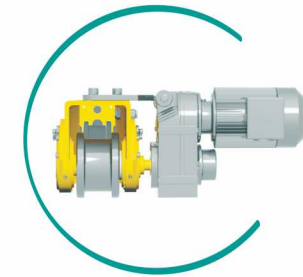
Maintenance-free crane special frequency converting three-in-one.

42CrMo alloy forged wheel, wear resistance, impact resistance, high performance, long life span. Compact structure, few parts, easy assembly. Adopt modular design, supply complete sets of equipment. Providing wheel group with diameter of 125, 160, 200, 250, 320, 400, 450, 500, 630. We also can provide non-standard wheel group according to the needs of customers. Bearing use TWB, LYC and HRB, If you ask use SKF, FAG, NSK, we can satisfy your request.

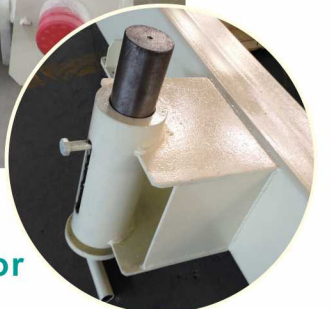
Trolley and crane are driven by Three-in-One driving mechanism, variable frequency speed regulation, the hard tooth face, electromagnetic disc brake.

Protection class: IP55, Insulation class: F, electrical sustained rate: 40% ED

The end beams are equipped with flat wheel or double rim wheels, anti-friction bearings, buffer blocks and derailment preventing end plate.



Ground anchor

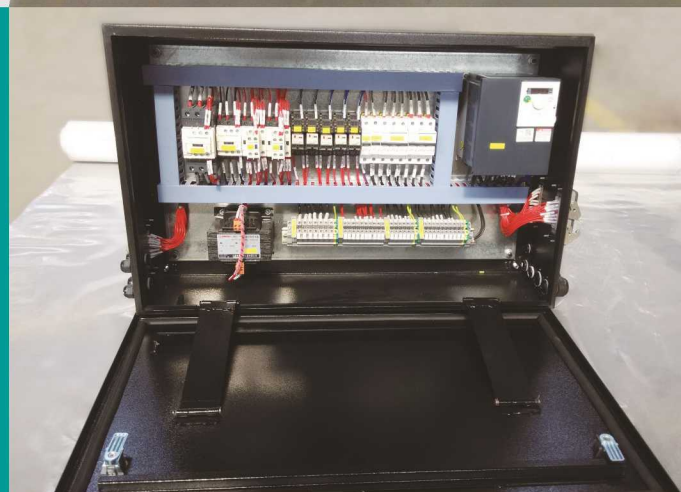


Leg

Legs are made of rectangular steel tube which are with high strength and small dimension.



Crane electrical control



OPTION



Pendant

Easy to control, unnecessary to add professional driver.
Double block button to achieve safety stop.
Following type or independent sliding type suspended under hoist.
Protection class IP65.

Lifespan

500,000 times

Remote Control

Easy to control, unnecessary to add professional driver, more free space for operator on the ground.
Tens of Thousands of frequency points, non-interference with each other.
Two steps push button or joystick station with emergency stop.

Lifespan: 500,000 times

Protection class **IP65**



Cable Properties:

Sheath: special polychloreprene (Butadiene-acrylonitrile rubber), it remains flexible at -15℃, flame resistance and self-extinguishing.

Thin structure with a minimum bending radius of 10cm, suitable for quick rewinding device, oil resistant and cold resistant, the power cord and communication line can be added in the core (and can also produce the circular structure).

Specification&model: YFFB 0.75~95 mm²



SERVICE

Our service solutions are specially made based on different requirements of individual clients. Meeting their standards could remove any of their worries. Including:

- Customized solutions
- Reliable, efficient and safe crane equipment
- High quality packaging
- Installation and assembly &test running
- Professional training
- Plenty of spare parts
- Maintenance
- Analysis and suggestions
- Intelligent crane design software
- The experienced team of engineers

Clescrane's service pack is safe and cost less. Clescrane's service pack can also be applied to cranes and hoists produced by other manufacturers.



OPTIONS

Safety

Sophisticated load handling methods reduces the risk of collisions and accidents.

Productivity

Time savings in load handling and final positioning makes processes more efficient.

Cost savings

Longer lifetime of components and less maintenance work results in better economy.



Extended Speed Range



Micro Speed



Slack Rope



Tandem



Inching



Restricted Load



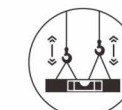
Sway Control



Load Floating



Shock Load



Synchronisation



Cranes in Tandem

**Advanced Product Solution Constant Innovation
Based on the Demand of Customers**